



tellus point round xs

xmp
available in White

TECHNICAL DATASHEET

tellus point round xs

tunableWhite
xmp

Technical Data

Dimensions 110 mm x 110 mm x 107 mm [L x W x H]
4.33 in x 4.33 in x 4.21 in [L x W x H]

Fixture Typ



tunableWhite

Color Temperatures tunableWhite 2700 K - 4000 K

Beam Angles 8°, 10°, 23°, 43°, 52°
8° x 31°, 10° x 42°, 12° x 60°, 14° x 100°, 30° x 58° (Tilt in C0-plane: -14°), 30°
x 11° (Tilt in C0-plane: -14°), 110°

Light Source 4 LED(s)

Light Source 2x Warm White / 2x Neutral White






Antiglare Honeycomb, linear louver

LED-Binning

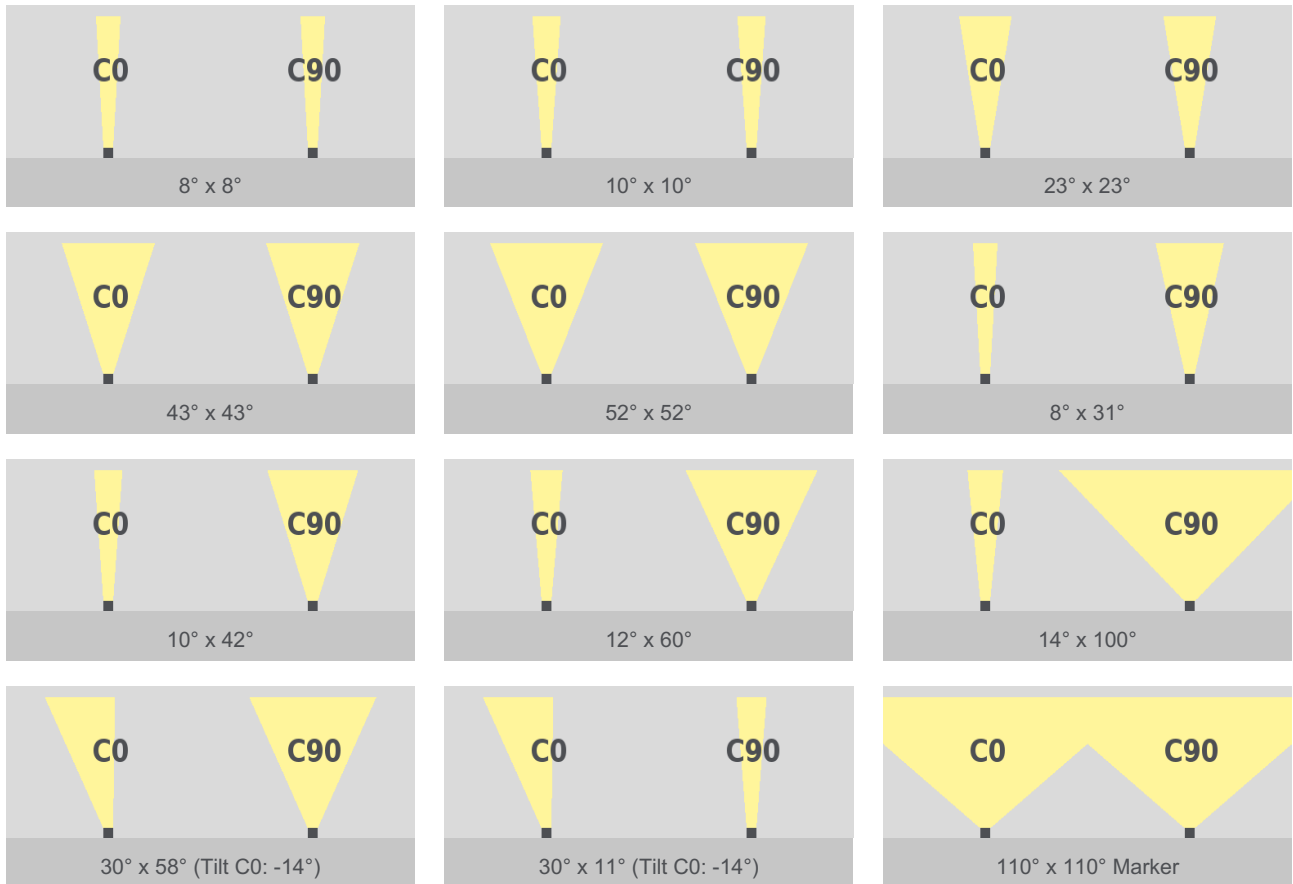


MacAdam Ellipses Binning 3

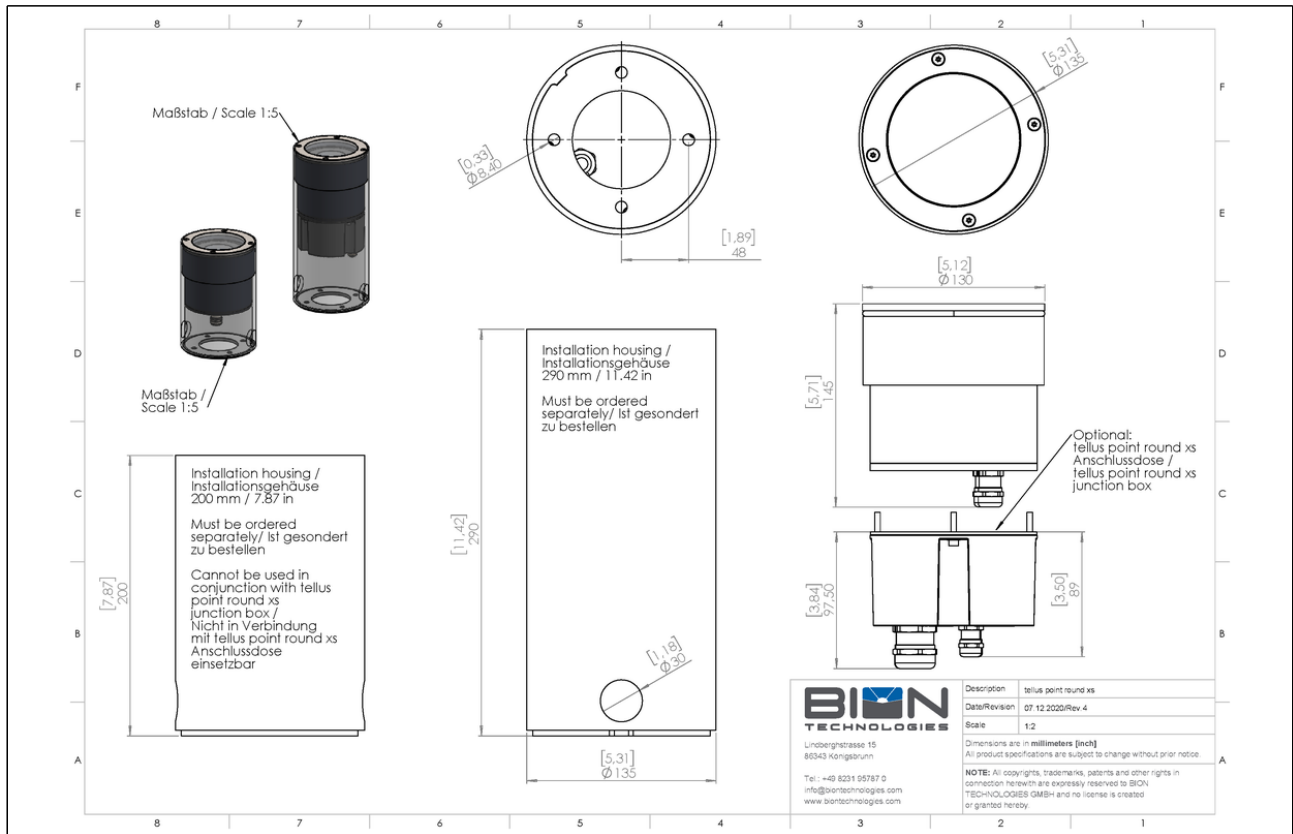
Control DMX, IOT

Input Voltage	Power supply: internal 100 - 240, 277 VAC (50 - 60 Hz) 127 - 431 VDC
Power Consumption	Max. 12 W
Protection Class	I
Storage Temperatur	-40 °C / +80 °C -40 °F / +176 °F
Operating Temperature	-40 °C / +40 °C -40 °F / +104 °F
Start-up Temperature	-25 °C / +40 °C -13 °F / +104 °F
Lumen Maintenance [L70]	65'000 h @ 25 °C (77 °F) 40'000 h @ 40 °C (104 °F)
LED-Class	Class 2 LED product
Housing	Aluminum die casting
Housing Color(s)	Black anodized
Lens	Tempered safety glass
Frame	Stainless steel
Weight	1,3 kg (2.9 lbs)
Load	500 kg 1100 lbs
Ingress Protection	IP67
Environment	 indoor  outdoor
Impact Protection	IK09
Certification	  

Beam Angles



Engineering Drawing



Project	Fixture#	Date
		Firm

Ordering Information

Choose the option that suits your needs and write its corresponding code on the appropriate line to form the product code.

TEL-PO-RD-XS-XMP- TW2740 - DIMMING - BEAM ANGLE - WIRING - GLARE PROTECTION - LEADERCABLE LENGTH - Y03

TYP - LUMINOUS COLOR		DIMMING		BEAM ANGLE		WIRING		GLARE PROTECTION		LEADERCABLE LENGTH	
TYP - LUMINOUS COLOR		DIMMING		BEAM ANGLE		WIRING		GLARE PROTECTION		LEADERCABLE LENGTH	
TW2740	tunableWhite - 2700 K - 4000 K	DMX	Dimmable - DMX	8X8	8° x 8°	CE	Europe	OP	No glare protection	1M	1 m (3.3 ft)
		IOT	Dimmable - IOT	10X10	10° x 10°	ETL	North America	HL	Honeycomb louver	3M	3 m (10 ft)
				23X23	23° x 23°			LL17	Linear louver 17°	6M	6 m (19.7 ft)
				43X43	43° x 43°			LL00	Linear louver 0°	9M	9 m (29.5 ft)
				52X52	52° x 52°			CGC	customized glare control	15M	15 m (49.2 ft)
				8X31	8° x 31°			Use LL17 only with beam angle www or wwn			
				10X42	10° x 42°						
				12X60	12° x 60°						
				14X100	14° x 100°						
				WWW	30° x 58° (Tilt in C0-plane: -14°)						
				WWN	30° x 11° (Tilt in C0-plane: -14°)						
				MARKER	110° x 110° Marker						

Sample Order Code: TEL-PO-RD-XMP-XS-TW2740-DMX-10X40-CE-LL00-6M-Y03

* Project-specific options are available - Please contact our Sales Representative for further information.



Lindberghstrasse 15
86343 Koenigsbrunn
Tel: +49 (0)8231/95787-0
Fax: +49 (0)8231/95787-29
www.biontechnologies.com
info@biontechnologies.com

YouTube: <http://www.youtube.com/user/BIONTECHNOLOGIES>

© 2023, BION TECHNOLOGIS GMBH
All rights reserved / Subject to change / Specifications may change without notice