





tellus point round xs installation housing

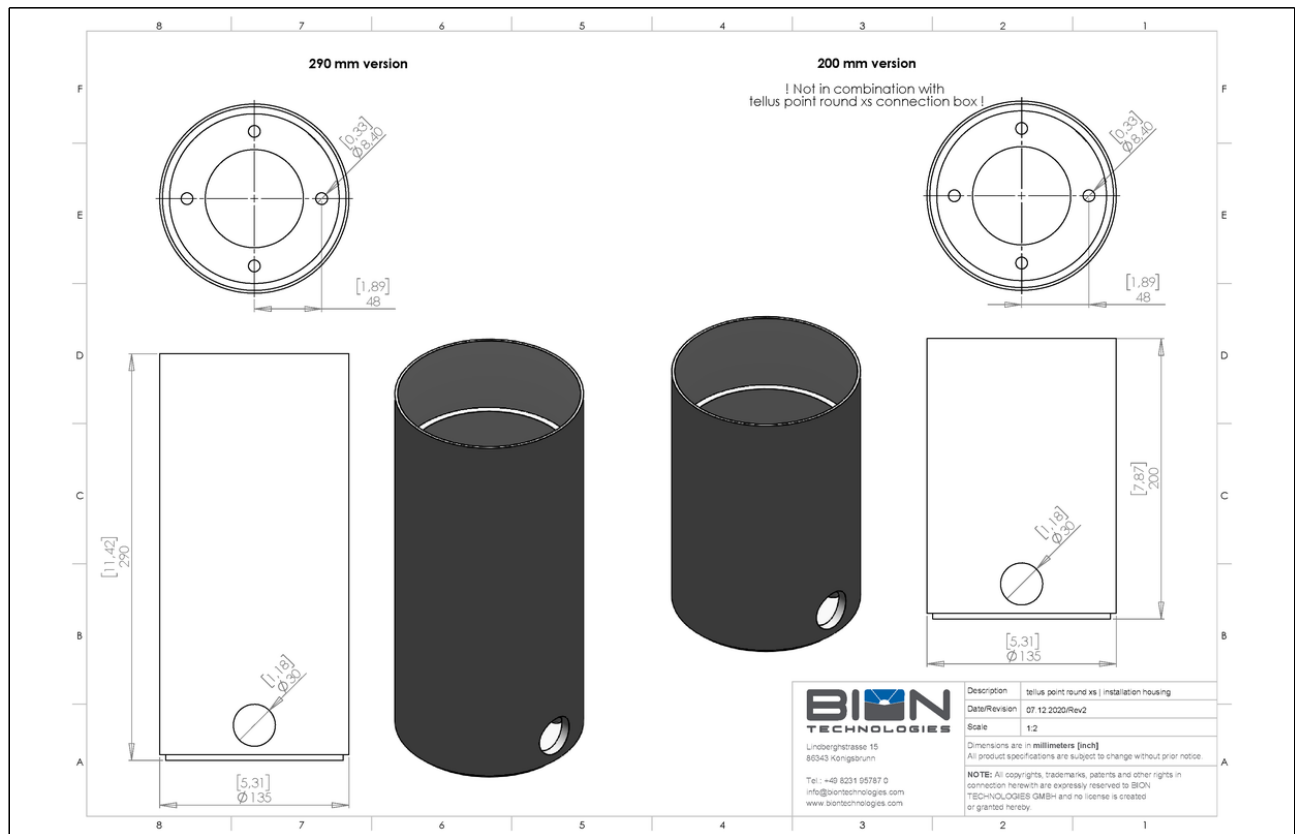
TECHNICAL DATASHEET

tellus point round xs installation housing

Technical Data

Dimensions	Ø 135 mm Ø 5.31 in
Standard Unit Lengths	200 mm (not with connec. box), 290 mm 7.88 in (not with connec. box), 11.42 in
Housing	Extruded aluminium profile
Housing Color(s)	 Aluminium anodized (Standard)
Load	500 kg (1102 lbs)
Certification	

Engineering Drawing



Project	Fixture#	Date
		Firm

Ordering Information

Choose the option that suits your needs and write its corresponding code on the appropriate line to form the product code.

TEL-PO-RD-XS-INBX- - Y02
FIXTURE LENGTH

FIXTURE LENGTH	
200	for 200 mm / 7.87 in (not with connec. box)
290	for 290 mm / 11.42 in

Sample Order Code: TEL-PO-RD-XS-INBX-290-Y01

* Project-specific options are available - Please contact our Sales Representative for further information.



Lindberghstrasse 15
86343 Koenigsbrunn
Tel: +49 (0)8231/95787-0
Fax: +49 (0)8231/95787-29
www.biontechnologies.com
info@biontechnologies.com

YouTube: <http://www.youtube.com/user/BIONTECHNOLOGIES>

© 2023, BION TECHNOLOGIS GMBH
All rights reserved / Subject to change / Specifications may change without notice