



# tellus m installation box

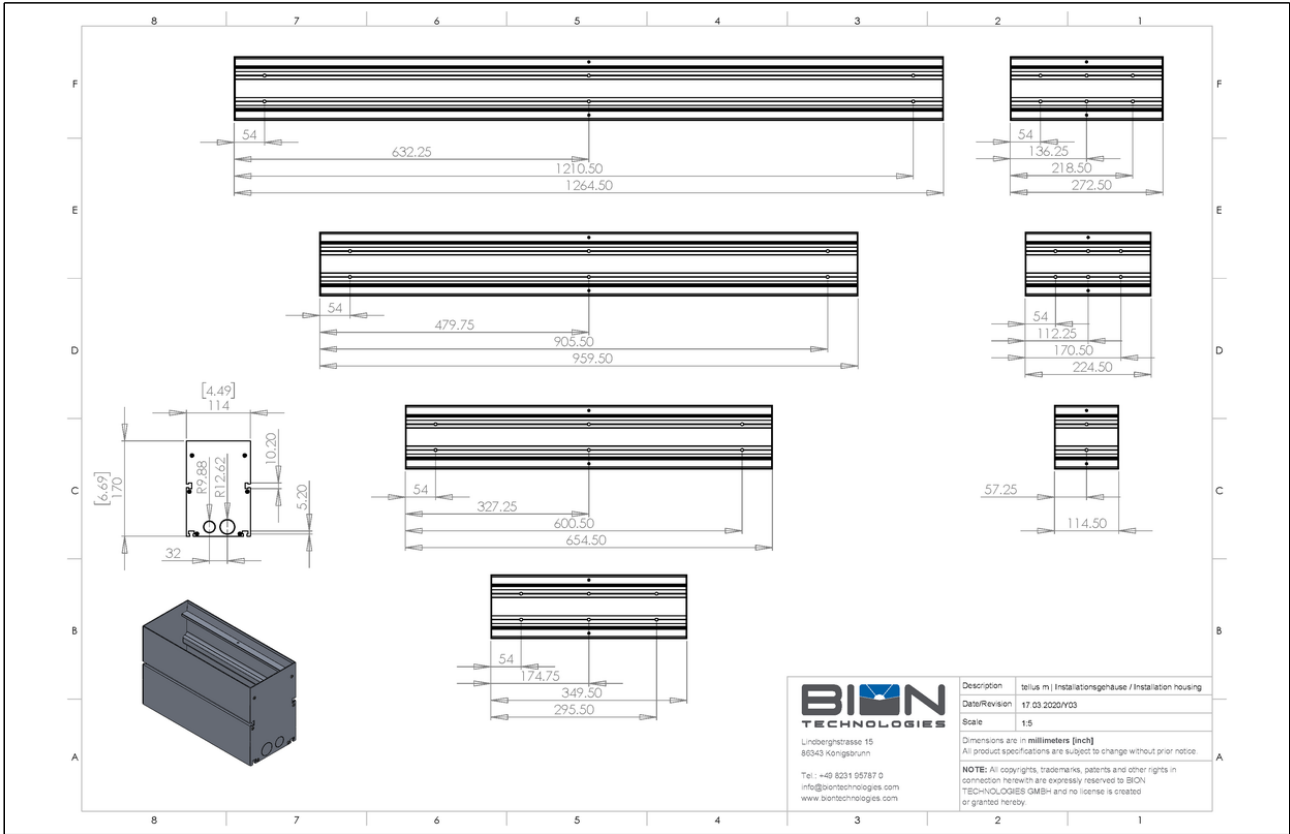
TECHNICAL DATASHEET

# tellus m installation box

## Technical Data

Dimensions	114 mm x 170 mm [W x H] 4.49 in x 6.69 in [W x H]
Standard Unit Lengths	114,5 mm (tellus point xs), 224,5 mm (tellus point s), 272,5 mm (tellus point m), 349,5 mm, 654,5 mm, 959,5 mm, 1264,5 mm 4.49 in (tellus point xs), 8.82 in (tellus point s), 10.71 in (tellus point m), 13.75 in, 25.75 in, 37.76 in, 49.77 in
Housing	Extruded aluminium profile
Housing Color(s)	 Aluminium anodized (Standard)
Weight	345 mm (13.59 in): 2.1 kg (4.63 lbs) 650 mm (25.60 in): 3.8 kg (8.38 lbs) 955 mm (37.60 in): 5.5 kg (12.13 lbs) 1260 mm (49.61 in): 7.2 kg (15.87 lbs)
Load	500 kg (1102 lbs)
Certification	

# Engineering Drawing



Project	Fixture#	Date
		Firm



## Ordering Information

Choose the option that suits your needs and write its corresponding code on the appropriate line to form the product code.

TEL-M-INBX-\_\_\_\_\_ - Y02  
FIXTURE LENGTH

FIXTURE LENGTH	
110	for 110 mm / 4.33 in (tellus point xs)
220	for 220 mm / 8.66 in (tellus point s)
268	for 268 mm / 10.55 in (tellus point m)
345	for 345 mm / 13.58 in
650	for 650 mm / 25.59 in
955	for 955 mm / 37.6 in
1260	for 1260 mm / 49.61 in

Sample Order Code: TEL-INBX-650-Y01

\* Project-specific options are available - Please contact our Sales Representative for further information.



Lindberghstrasse 15  
86343 Koenigsbrunn  
Tel: +49 (0)8231/95787-0  
Fax: +49 (0)8231/95787-29  
[www.biontechnologies.com](http://www.biontechnologies.com)  
[info@biontechnologies.com](mailto:info@biontechnologies.com)

YouTube: <http://www.youtube.com/user/BIONTECHNOLOGIES>

© 2023, BION TECHNOLOGIS GMBH  
All rights reserved / Subject to change / Specifications may change without notice