






murus m
pureWhite | pureColor

TECHNICAL DATASHEET

murus m

pureWhite | pureColor

Technical Data

Dimensions	130 mm x 150 mm x 170 mm [B x T x H] 5.12 in x 5.91 in x 6.69 in [L x B x H]
Fixture Typ	  pureWhite pureColor
Color Temperatures pureWhite	2700 K, 3000 K, 4000 K * Project-specific color temperature for pureWhite available.
LED-Colors pureColor	Red, Green, Blue, Amber * Project-specific colors for pureColor available.
Luminous Flux	600 lm Constant Current max. 500 mA
Color Rendering Index	$R_a \geq 80$
LED-Binning	
MacAdam Ellipses Binning	3
Dimming	Dimmable (DALI , 0 - 10 V , DMX , TRIAC , POT , IOT) external

Input Voltage

Optionally internal / external

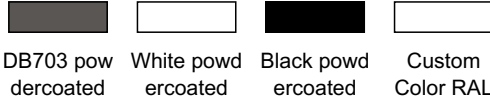
Power Consumption

Max. 7 W

Housing

Aluminum die casting

Housing Color(s)



Ingress Protection

IP66

Environment



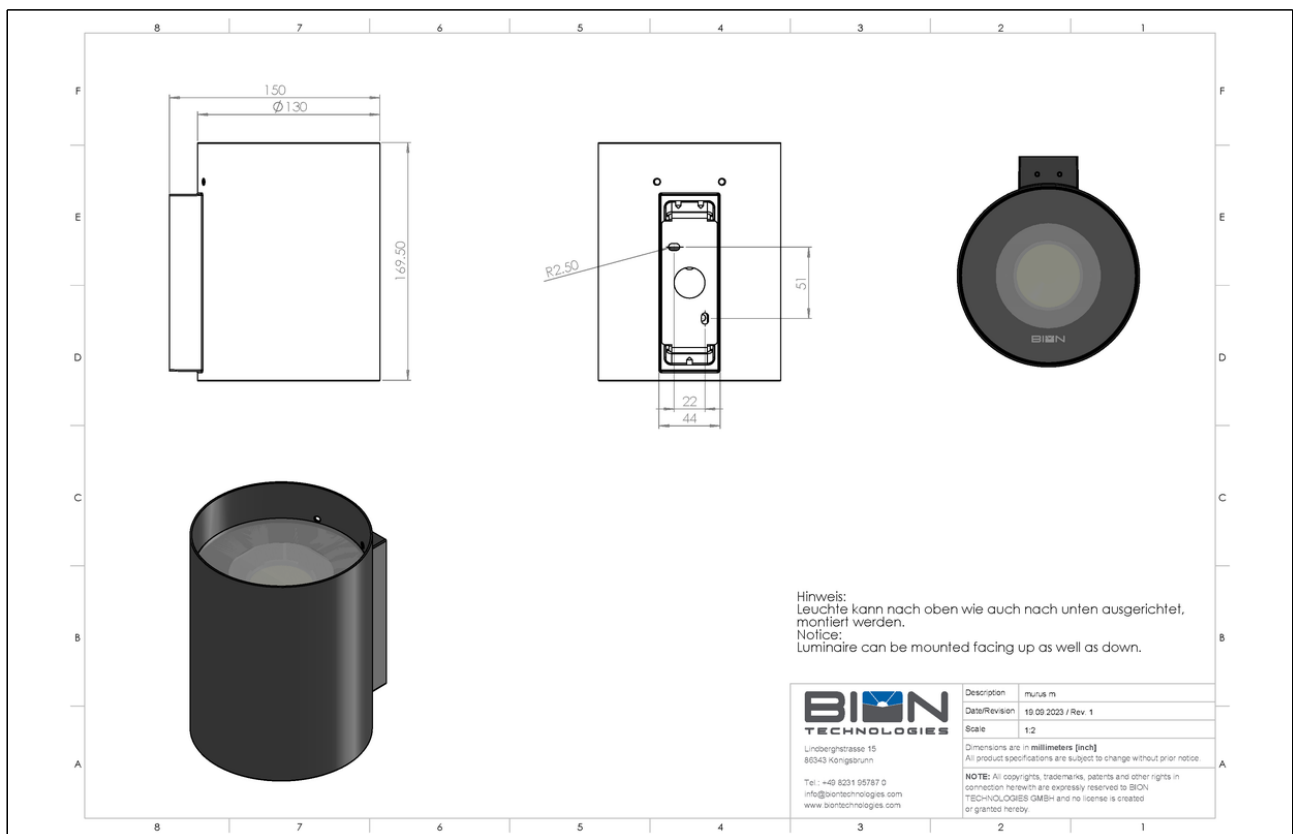
Impact Protection

IK08

Certification



Engineering Drawing





Lindberghstrasse 15
86343 Koenigsbrunn
Tel: +49 (0)8231/95787-0
Fax: +49 (0)8231/95787-29
www.biontechnologies.com
info@biontechnologies.com

YouTube: <http://www.youtube.com/user/BIONTECHNOLOGIES>

© 2023, BION TECHNOLOGIS GMBH
All rights reserved / Subject to change / Specifications may change without notice