



**firmus I**  
RGBWquad

TECHNICAL DATASHEET

# firmus I

## RGBWquad

### Technical Data

Fixture Typ



RGBWquad

Color Temperatures W-Channel

3000 K, 4000 K, 6500 K

Beam Angles

10°, 22°, 34°, 60°, 8° x 31°  
10° x 40°, 12° x 60°, 14° x 100°, 30° x 60°

Luminous Flux

3732 lm

Light Source

12 LED(s)

Control

DMX, DALI, IOT

Input Voltage

Power supply: internal | 100 - 240, 277 VAC (50 - 60 Hz)

Power Consumption

Max. 90 W

Storage Temperatur

-40 °C / +80 °C | -40 °F / +176 °F

Operating Temperature

-40 °C / +40 °C | -40 °F / +104 °F

Start-up Temperature

-25 °C / +40 °C | -13 °F / +104 °F

Housing Color(s)



DB703 pow  
dercoated    White powd  
ercoated    Black powd  
ercoated    Custom  
Color RAL

Ingress Protection

IP66

Environment



indoor

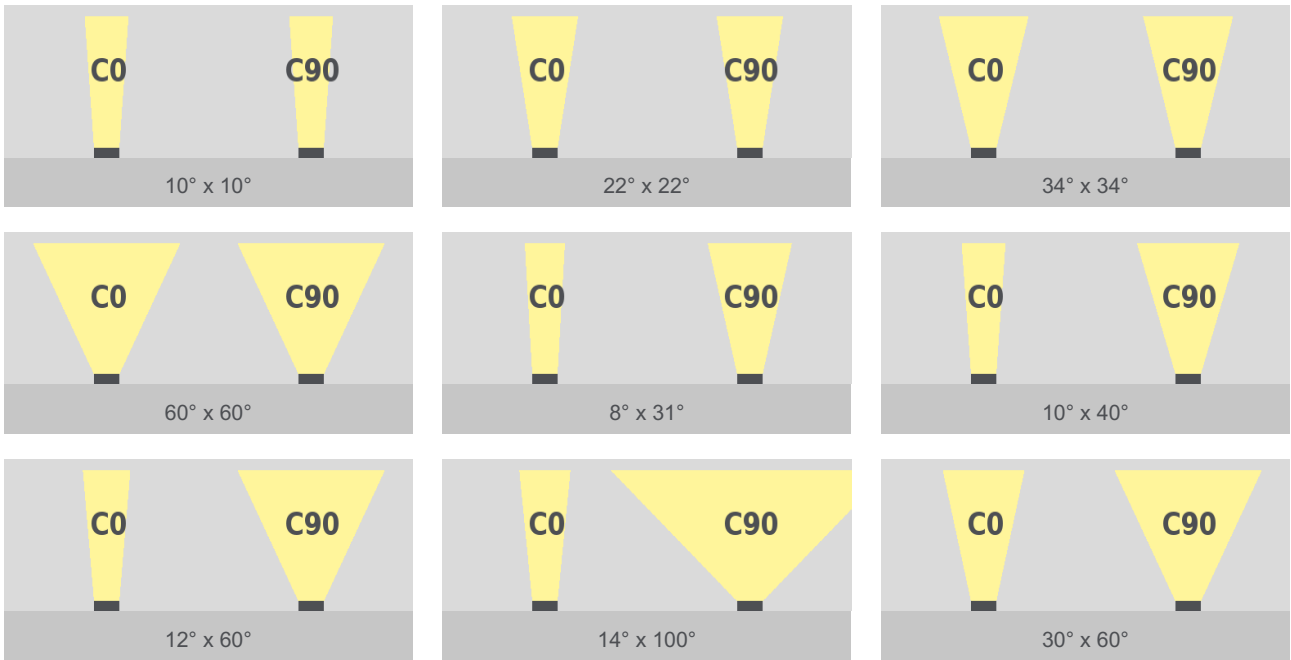


outdoor

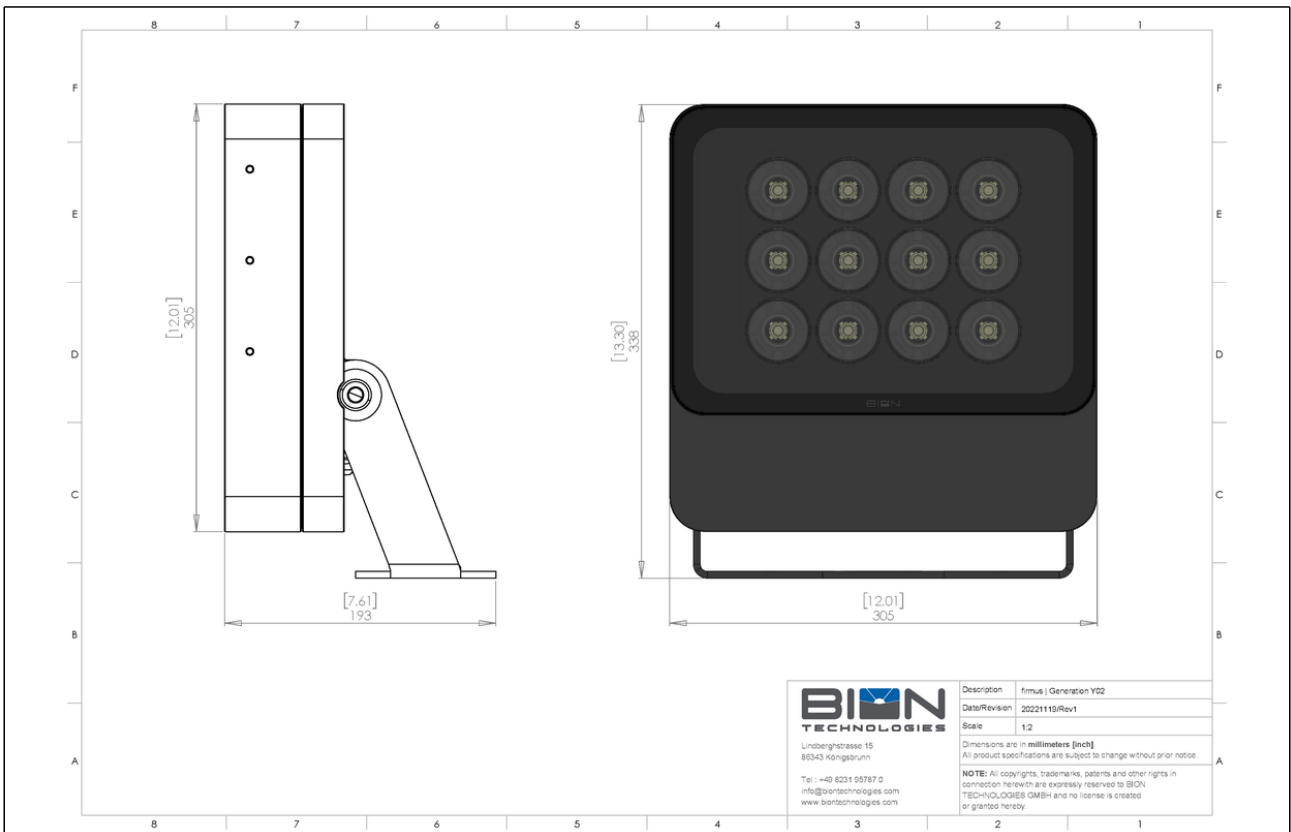
Certification



## Beam Angles



## Engineering Drawing



<b>Project</b>	<b>Fixture#</b>	<b>Date</b>
		<b>Firm</b>

## Ordering Information

Choose the option that suits your needs and write its corresponding code on the appropriate line to form the product code.

FIR-L- \_\_\_\_\_ - \_\_\_\_\_ - \_\_\_\_\_ - \_\_\_\_\_ - \_\_\_\_\_ - \_\_\_\_\_ - Y02

TYP - LUMINOUS  
COLOR

DIMMING

BEAM ANGLE

WIRING

HOUSING COLOR

WIRING  
CONFIGURATION

LEADERCABLE  
LENGTH

TYP - LUMINOUS COLOR	
RGBW30	RGBW - 3000 K
RGBW40	RGBW - 4000 K
RGBW65	RGBW - 6500 K

WIRING	
CE	Europe
ETL	North America

LEADERCABLE LENGTH	
000	no leader cable - self assembly
006	60 cm (23.6 in) leader cable
030	3 m (118 in) leader cable

DIMMING	
DMX	Dimmable - DMX
DALI	Dimmable - DALI
IOT	Dimmable - IOT

HOUSING COLOR	
DB	DB703 powdercoated
WH	White powdercoated
BL	Black powdercoated
RAL_____	Custom Color RAL

BEAM ANGLE	
10X10	10° x 10°
22X22	22° x 22°
34X34	34° x 34°
60X60	60° x 60°
8X31	8° x 31°
10X40	10° x 40°
12X60	12° x 60°
14X100	14° x 100°
30X60	30° x 60°

WIRING CONFIGURATION	
PIDX	Power IN only
PIDI	Power IN + Daten IN
PIDO	Power IN + Data IN/OUT
PODI	Power IN/OUT + Data IN
PODO	Power IN/OUT + Data IN/OUT

Sample Order Code: FIR-L-RGBW40-IOT-34X34-CE-DB-Y02

\* Project-specific options are available - Please contact our Sales Representative for further information.



Lindberghstrasse 15  
86343 Koenigsbrunn  
Tel: +49 (0)8231/95787-0  
Fax: +49 (0)8231/95787-29  
[www.biontechnologies.com](http://www.biontechnologies.com)  
[info@biontechnologies.com](mailto:info@biontechnologies.com)

YouTube: <http://www.youtube.com/user/BIONTECHNOLOGIES>

© 2023, BION TECHNOLOGIS GMBH  
All rights reserved / Subject to change / Specifications may change without notice