



# firmus I

pureWhite | pureColor

TECHNICAL DATASHEET

## Technical Data

Fixture Typ



pureWhite



pureColor

Color Temperatures pureWhite

2700 K, 3000 K, 3500 K, 4000 K

\* Project-specific color temperature for pureWhite available.

LED-Colors pureColor

Red, Green, Blue, Amber

Beam Angles

10°, 22°, 34°, 60°, 8° x 31°

10° x 40°, 12° x 60°, 14° x 100°, 30° x 60°

Luminous Flux

6600 lm

Light Source

12 LED(s)

Color Rendering Index

R<sub>a</sub> >= 80

Dimming

Dimmable (0 - 10 V , IOT , DMX , DALI)

Input Voltage

Power supply: internal | 100 - 240, 277 VAC (50 - 60 Hz)

Power Consumption

Max. 90 W

Storage Temperatur

-40 °C / +80 °C | -40 °F / +176 °F

Operating Temperature

-40 °C / +40 °C | -40 °F / +104 °F

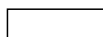
Start-up Temperature

-25 °C / +40 °C | -13 °F / +104 °F

Housing Color(s)



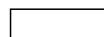
DB703 pow  
dercoated



White powd  
ercoated



Black powd  
ercoated



Custom  
Color RAL

Ingress Protection

IP66

Environment



indoor

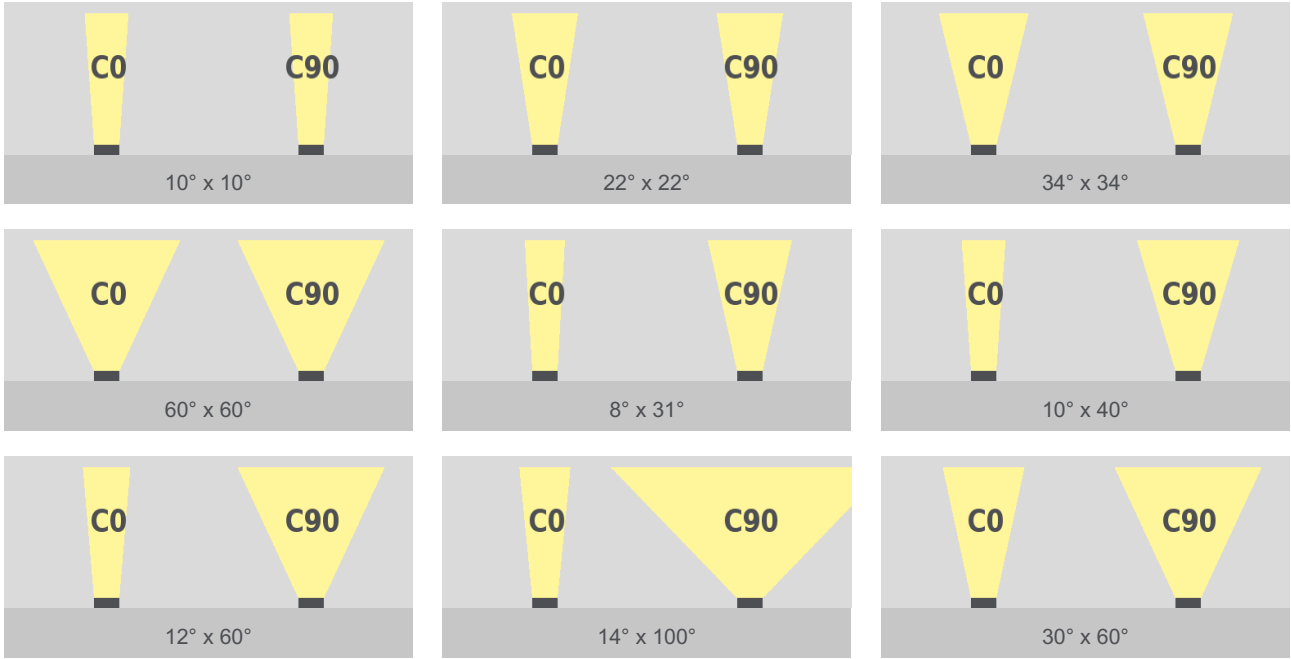


outdoor

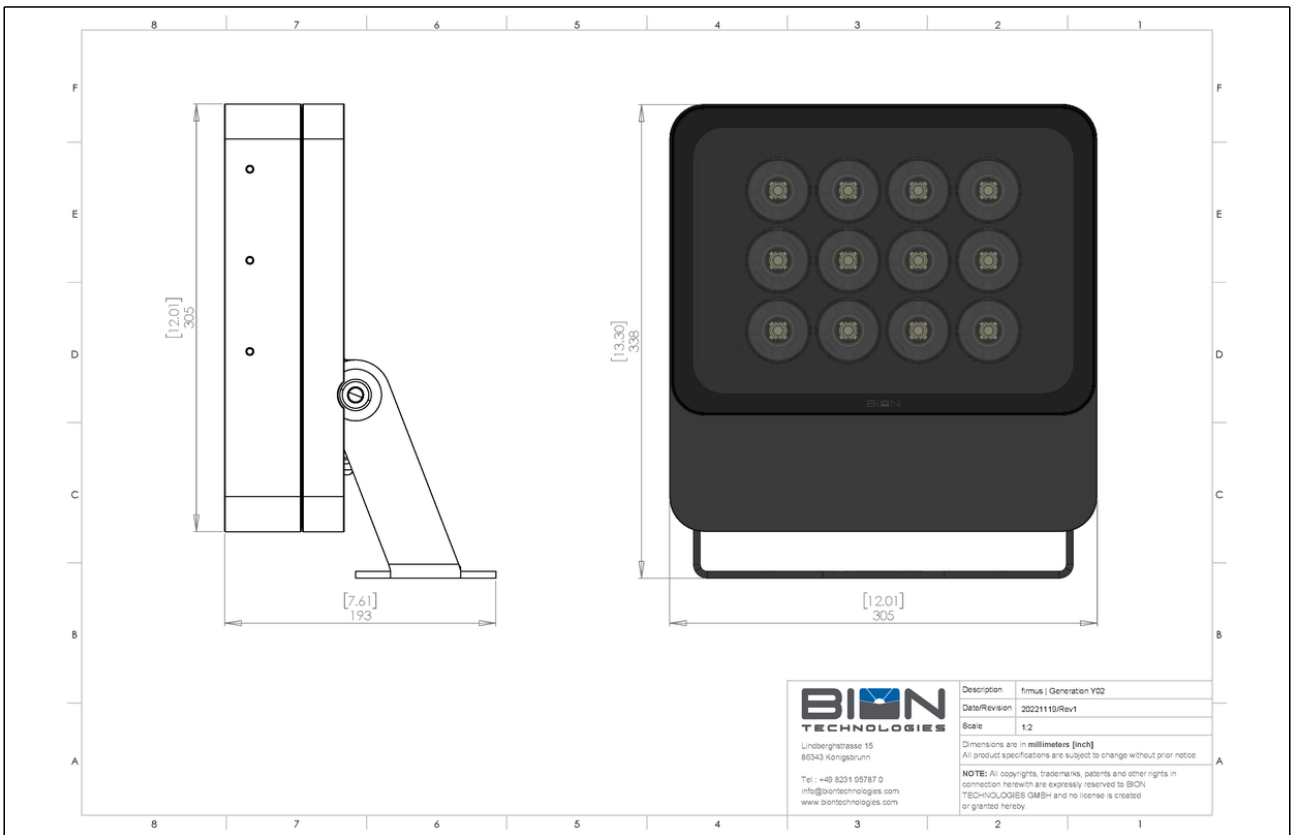
Certification



# Beam Angles



# Engineering Drawing



<b>Project</b>	<b>Fixture#</b>	<b>Date</b>
		<b>Firm</b>

## Ordering Information

Choose the option that suits your needs and write its corresponding code on the appropriate line to form the product code.

FIR-L- \_\_\_\_\_ - \_\_\_\_\_ - \_\_\_\_\_ - \_\_\_\_\_ - \_\_\_\_\_ - \_\_\_\_\_ - Y01

TYP - LUMINOUS COLOR
DIMMING
BEAM ANGLE
WIRING
HOUSING COLOR
WIRING CONFIGURATION
LEADERCABLE LENGTH

TYP - LUMINOUS COLOR	
<b>PW27</b>	pureWhite - 2700 K
<b>PW30</b>	pureWhite - 3000 K
<b>PW35</b>	pureWhite - 3500 K
<b>PW40</b>	pureWhite - 4000 K
<b>PCRE</b>	pureColor - Red
<b>PCGR</b>	pureColor - Green
<b>PCBL</b>	pureColor - Blue
<b>PCAM</b>	pureColor - Amber

BEAM ANGLE	
<b>10X10</b>	10° x 10°
<b>22X22</b>	22° x 22°
<b>34X34</b>	34° x 34°
<b>60X60</b>	60° x 60°
<b>8X31</b>	8° x 31°
<b>10X40</b>	10° x 40°
<b>12X60</b>	12° x 60°
<b>14X100</b>	14° x 100°
<b>30X60</b>	30° x 60°

WIRING CONFIGURATION	
<b>PIDX</b>	Power IN only
<b>PIDI</b>	Power IN + Daten IN
<b>PIDO</b>	Power IN + Data IN/OUT
<b>PODI</b>	Power IN/OUT + Data IN
<b>PODO</b>	Power IN/OUT + Data IN/OUT

LEADERCABLE LENGTH	
<b>000</b>	no leader cable - self assembly
<b>006</b>	60 cm (23.6 in) leader cable
<b>030</b>	3 m (118 in) leader cable

DIMMING	
<b>0-10V</b>	Dimmable - 0-10V
<b>IOT</b>	Dimmable - IOT
<b>DMX</b>	Dimmable - DMX
<b>DALI</b>	Dimmable - DALI

WIRING	
<b>CE</b>	Europe
<b>ETL</b>	North America

HOUSING COLOR	
<b>DB</b>	DB703 powdercoated
<b>WH</b>	White powdercoated
<b>BL</b>	Black powdercoated
<b>RAL_____</b>	Custom Color RAL

\* Project-specific options are available - Please contact our Sales Representative for further information.



Lindberghstrasse 15  
86343 Koenigsbrunn  
Tel: +49 (0)8231/95787-0  
Fax: +49 (0)8231/95787-29  
[www.biontechnologies.com](http://www.biontechnologies.com)  
[info@biontechnologies.com](mailto:info@biontechnologies.com)

YouTube: <http://www.youtube.com/user/BIONTECHNOLOGIES>

© 2023, BION TECHNOLOGIS GMBH  
All rights reserved / Subject to change / Specifications may change without notice