



DATA-BOX

TECHNICAL DATASHEET

DATA-BOX

Technical Data

Dimensions 254 mm x 180 mm x 90 mm [W x H x D]
10 in x 7.08 in x 3.54 in [W x H x D]

Input Voltage Power supply: external
10 - 48 VDC (Power supply not included)

Power Consumption Max. 10 W

Operating Temperature -25 °C / +40 °C | -13 °F / +104 °F

Housing Polycarbonate GF10

Housing Color(s) RAL 7035 (Light gray)

Ingress Protection IP66

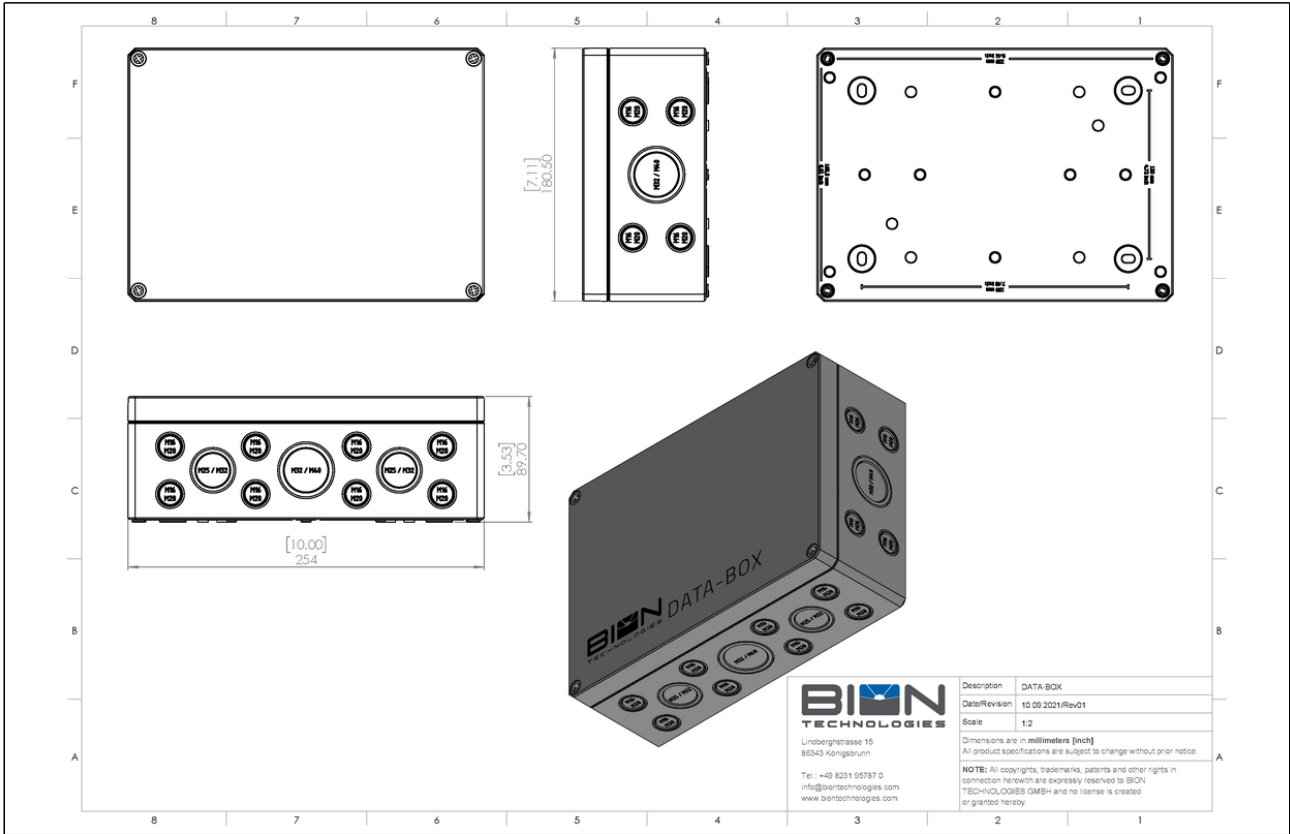
Environment 
outdoor

Impact Protection IK08

Certification   

Additional Information DMX IN/THROUGH
4x Ports OUT

Engineering Drawing





Lindberghstrasse 15
86343 Koenigsbrunn
Tel: +49 (0)8231/95787-0
Fax: +49 (0)8231/95787-29
www.biontechnologies.com
info@biontechnologies.com

YouTube: <http://www.youtube.com/user/BIONTECHNOLOGIES>